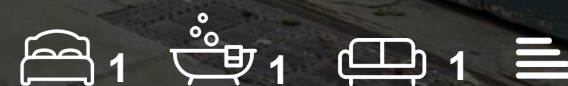




GREENHILL

4E Honey Lane
, Hertford, SG14 1DN
£1,050 Per month



4E Honey Lane, Hertford, SG14 1DN

Greenhill Estates are delighted to bring to market this newly refurbished top floor luxury one bedroom apartment set within the heart of Hertford town centre offering fantastic access to all the local amenities including pubs, restaurants, shops and is also within walking distance of both Hertford East and Hertford North mainline railway stations which serve direct access into London.

This stunning apartment offers delightful accommodation throughout including: a lounge, a generous double bedroom, an integrated modern kitchen with brand new appliances and a modern shower room. Further benefits include Brand new boiler & newly fitted double glazed windows.

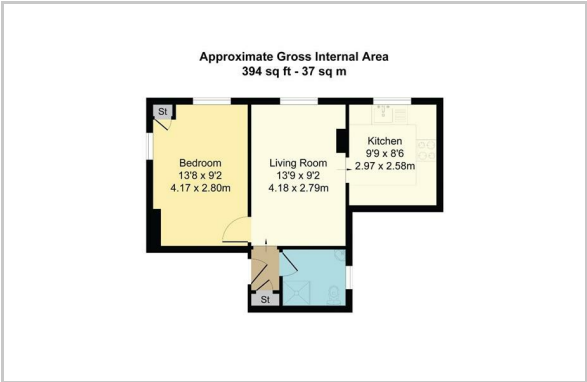
FULLY FURNISHED
AVAILABLE 28TH OCTOBER OR EARLIER IF REQUIRED



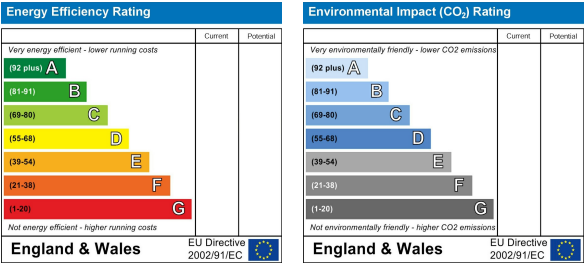
Area Map



Floor Plan



Energy Efficiency Graph



These particulars, whilst believed to be accurate are set out as a general outline only for guidance and do not constitute any part of an offer or contract. Intending purchasers should not rely on them as statements of representation of fact, but must satisfy themselves by inspection or otherwise as to their accuracy. No person in this firms employment has the authority to make or give any representation or warranty in respect of the property.